

Different Futures

End of Year 2

September 2019

**Project Coordinator - Claire Cooke
Building 3, Saltisford Office Park, Warwick**

07584 580 779

differentfutures@warwickshire.gov.uk

Why Different Futures?

About 5 years ago, a team of workers from the care system in Hackney noticed a pattern in that many of the children that had been taken into care had been removed from the same parents. They knew that after the child was taken into care, often for the same reasons as before, the birth parent would be left without any further support. The birth mother would often get pregnant again quite quickly and the destructive cycle would start again

Different Futures began as a 2 year project with the aim of breaking the cycle of recurrent care proceedings in Warwickshire and giving everybody the chance for a different future in a safe, non - judgemental environment.

We work with clients to create a plan of action, focused on making progress in the clients life in working towards their goals.

For some, this plan will help them to reduce risks and meet needs with the end goal of being a parent. Others may want to improve their situation without parenting being a consideration

2014

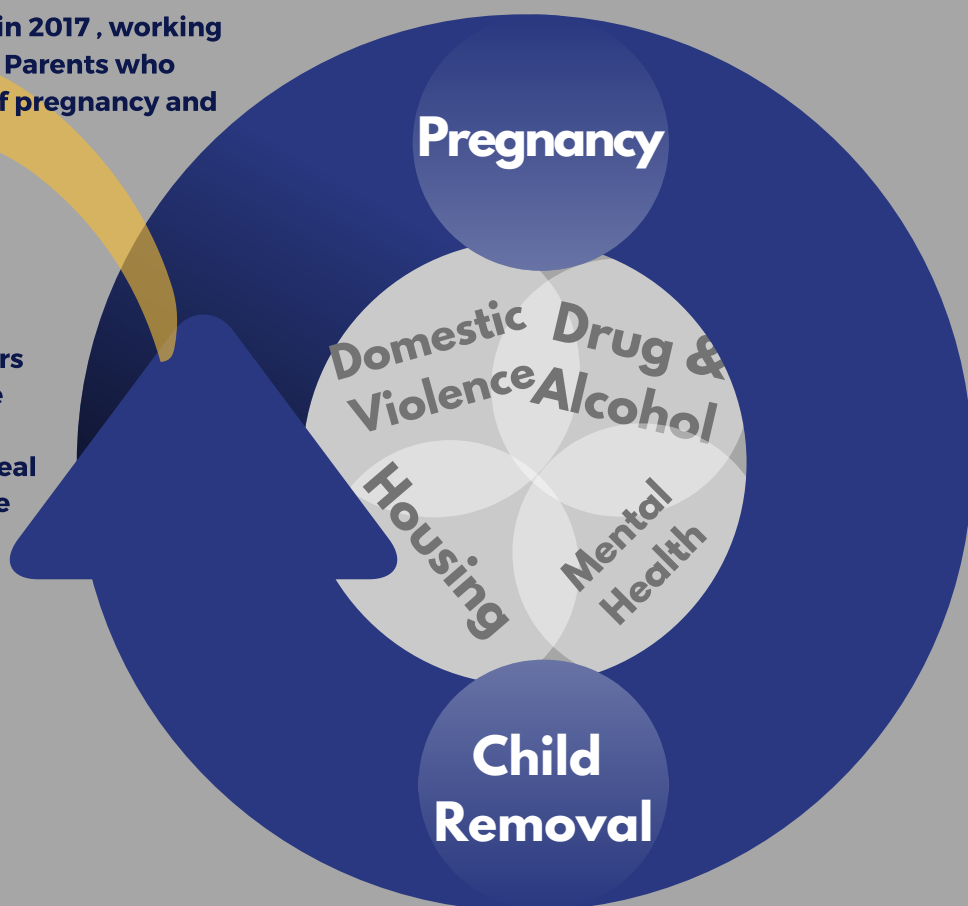
A project called 'Pause' began in Hackney to work with Birth Mothers whose children had been taken into care. Pause supported them to break the recurrent cycle of pregnancy and child removal

2017

Different Futures began in 2017 , working with Warwickshire Birth Parents who are central to the cycle of pregnancy and care proceedings.

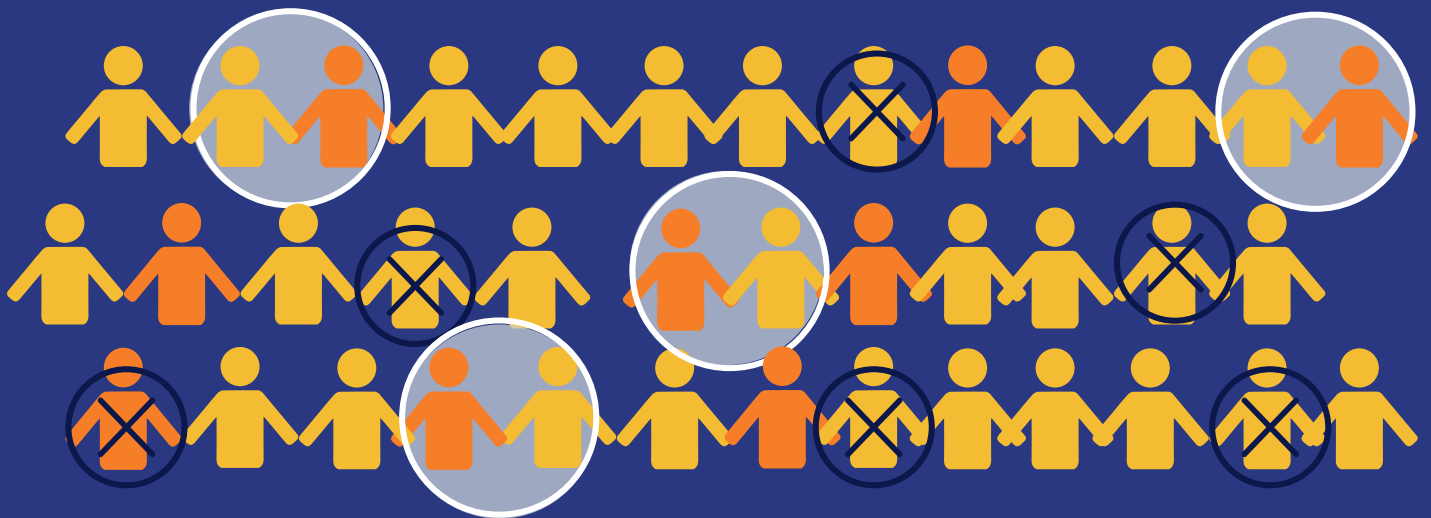
2019

Different Futures successfully works with Birth Mothers, their Partners and Birth Fathers to find a breathing space away from the recurrent pregnancies and the ordeal of going through the care system.



Our Clients

at the end of Year 2



Over the course of Year 2, 35 clients have been engaged with Different Futures' Project Workers. Of those 35, 26 clients are female and 9 are male. There are 4 couples that make up the total.

19 of the 35 clients have been with the Different Futures service for over a year, so 54% of the total number. Almost half of the clients in their second year have stayed engaged for over 22 months and will be nearing the end of the project

16 new clients engaged with Different Futures across the 2nd year of the project.

6 clients in total, ceased working with the project. Unfortunately 4 of the 6 had been working with Different Futures for 13 months or over, 2 had been engaged with

with Different Futures for 12 months or less. Some clients cease working with the service as they begin work with another agency such as Warwickshire Birth Family Support. Some clients have exited the programme through 'no fault', where mental health issues are a concern or where the client has felt that they are not 'in the right place' to continue. These clients are always welcome to re-engage with the service.

Some clients fully engage with Different Futures for some time and yet lose touch even after repeated attempts to contact them.

To give some perspective, Only 7 clients in total have disengaged over the 2 years and one of those 7 has returned to the service to continue their positive work

With Different Futures for 12 months or less

46%

12 months or less
40%

12 m or less
Ceased service
6%

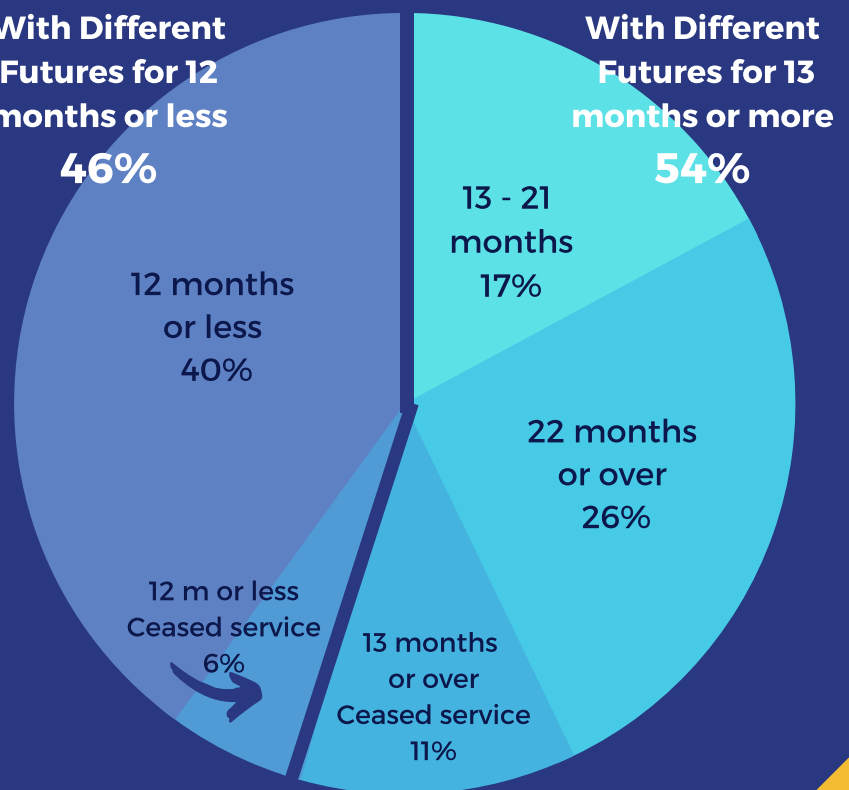
With Different Futures for 13 months or more

54%

13 - 21 months
17%

22 months or over
26%

13 months or over
Ceased service
11%



Our Clients

at the end of Year 2

The 35 clients that have engaged with Different Futures over the 2 years have previously had a total of 77 children removed to permanence

There were



Births amongst the 35 clients across the 2 years of the Different Futures project.

Investing to save.

The Detailed Business Case of November 2016 analysed the financial costs of a child being removed into care. The figure was found to be £23,191 per mother per year.

The success at the end of Year 2 has seen the Different Futures team become a permanent project and take on a much needed 3rd project worker. This will allow the project to take on more clients across the county, breaking the recurrent cycle of pregnancy and care proceedings.

YEAR 3
(with 3 Project Workers)

36 Clients
3 Project Workers

£834,876

Gross savings

YEAR 1
(with 2 Project Workers)

22 Clients
2 Project Workers

£510,202

Gross savings

YEAR 2
(with 2 Project Workers)

28 Clients
2 Project Workers
At full capacity

£649,348

Gross savings

Our Clients

before Different Futures

89%

Have Mental Health Issues

80%

Unemployed

63%

Had no contraception in place

69%

In Debt

63%

Vulnerably housed or homeless

60%

Have experienced Domestic Violence

Different Futures began working with their first clients in July 2017. The project offers a 2 year intensive support programme with a year's follow up support, if needed.

Just over a quarter of the clients are coming to the end of the 2 year programme after working with their project workers to address the difficulties in their lives, reduce their risks as parents and work on their own needs.

Our Clients at the end of year 2

Just over half of Different Futures Clients (54%) are in or nearing the end of their second year with the project.

We will look at a general overview of the areas that our clients are working hard in and go on to compare the results against length of time in service.

48%

Almost half of the clients that were facing Mental Health issues are in counselling

7 out of 10 clients facing Housing Issues were supported into secure accommodation



58%

Of Different Futures clients that had Debt Issues have been helped out of debt

100%

of current Different Futures females have contraception in place - up from 37%

40%

of those that were unemployed at the start of their time with Different Futures are in employment or training



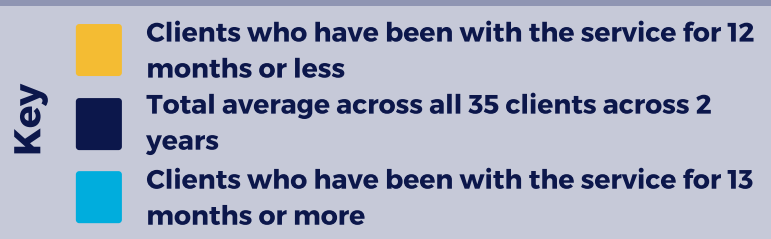
Our Clients a comparison

The progression of clients in their second year of working with Different Futures is quite evident when compared to clients that are in the first year of the project. The graph below clearly shows where the current support is having a positive effect and where the clients are facing barriers.

As can be seen from the graph below, there are over 30% more 2nd year clients in employment or training than 1st year clients - quite a substantial increase. 23% more 2nd year clients have had support through issues with debt. There is a 16% increase in the number of 2nd year clients that have Mental Health Issues being in counselling as opposed to first year clients across Year 2 of the project.

100% of Year 2 clients have contraception in place and the percentage is only lower for first year clients and as an average, because of 2 clients without contraception who have since ceased engaging with the service.

Graph to show the comparison between the percentage of clients from their first year with the project against those in their second year of Different Futures, who have been supported through different life issues



DOMESTIC ABUSE SUPPORT

Almost 2 thirds of Different Futures' clients in total have faced or are still dealing with Domestic Abuse. 43% of clients in their 1st year with the project and three quarters of clients in their second year have or still are facing Domestic Abuse. 95% of these clients also have Mental Health Issues.

A lot of the Different Futures' Project Workers' time is spent gaining the trust of clients who have no reason to trust professionals. The Domestic Abuse support that is currently available is the WINGS programme provided by Refuge. This programme requires the client to have a further support worker through Wings, however they often struggle to work with a further professional that is not necessary for them.

WINGS mainly consists of group work which is unsuitable for some of our clients. Some 1-1's are available but we have found this difficult to access at times. Some of our clients are still in a relationship with the perpetrator of the abuse and support offered to these clients seems limited through WINGS and yet they are often the most in need.

BARRIERS in Year 2



MENTAL HEALTH

A large proportion (89%) of Different Futures' clients have Mental Health issues. Almost half of these (48%) have had or are currently accessing counselling. This is a positive increase on last year where only 13% were able to access any kind of counselling or therapy.

Although this is a positive increase, Different Futures' clients often need more in depth Therapeutic Intervention that is either not available or constitutes a very long waiting list.

The Different Futures project still has no Mental Health representative sitting on our quarterly Panel to advise.

DRUG & ALCOHOL RECOVERY

Over half of Different Futures clients (54%) have Drug and/or Alcohol issues across the 2 years of the project. Of those 54% only 16% are in recovery or receiving support.

Different Futures' clients have experienced difficulties accessing CGL service appointments that are usually within the community. Home visits are usually only available through Compass and to those under the age of 25.

Positively, there is now a Recovery Coordinator available specifically for those clients who experience these issues and have lost children to permanence. We are hoping that this new Recovery Coordinator will be able to increase the number of Different Futures' clients who access the service and begin the road to recovery.

Working towards a Different Future

Different Futures began as a 2 year project. The success of the first 2 years has resulted in the project becoming permanent.

It has been a positive step for Different Futures in that CGL has recognised the need for a Recovery Coordinator who can work specifically with those that have lost children and help tailor the support to our clients.

The support that we receive from all of the agencies that are involved with Different Futures is always positive and means that we can help our clients with a wide range of needs.

The Different Futures Project Coordinator has been working on a Pre-Pregnancy Assessment (PPA) that clients can use after they have finished working with Different Futures. The PPA will show the positive changes and if necessary any outstanding work, which would help to inform any Pre-Birth assessments in the future. We are currently going through this process for the first time with a couple who have finished the 2 years and wish to go on to parent future children.

Supporting the steps towards a Different Future

We couldn't do this without the commitment of our partners;



Compass



PEOPLE
POTENTIAL
POSSIBILITIES